



WHAT IS CROWDFUNDING?



ANYONE CAN CREATE A PROJECT



ANYONE CAN BACK CHANGE



PEOPLE, COMPANIES & COUNCILS CAN COLLABORATE

472 PUBLIC BACKERS

872 POUNDS,
2 SHILLINGS & 9 PENCE

CORPORATION OF
LEICESTER

£1,200 REMAINDER

WHO'S SUPPORTING CROWDFUND LEICESTER?

BACKERS



WHERE MORE HAPPENS
**HIGHCROSS
LEICESTER**



THE CITY MAYOR'S COMMUNITY ENGAGEMENT FUND

Support activities, initiatives and projects that can make a real difference to the quality of life for communities of Leicester.

Particularly those that are normally considered underserved, hard to reach or difficult to engage.



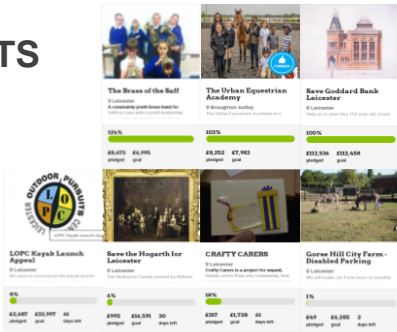
THE CITY MAYOR'S LAND OFFER

Ideas that can make better use of land and spaces across the City.

The best ideas could see local groups or organisations taking responsibility for this land in the short to medium term, or, in some cases, permanently.



PROJECTS



HOW CAN YOU GET INVOLVED?



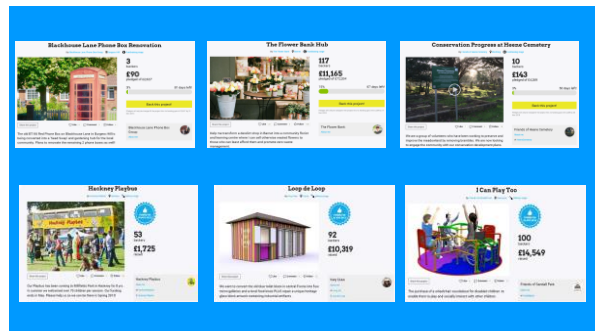
CREATE



PLEDGE



PROMOTE



KEEP IN TOUCH



@CROWDFUNDLEIC